



**THE
DINNER THEATRE
OF COLUMBIA**

P R E S E N T S

GODSPELL

*The timeless tale of
friendship, loyalty and love.*

AUGUST 27 - OCTOBER 31, 2021

NEXT AT TOBY'S



NOVEMBER 5 - JANUARY 9, 2022



Make Extraordinary

Howard Hughes



HOWARDHUGHES.COM
DOWNTOWNCOLUMBIAMD.COM

Good rates backed by
Good Neighbor service
That's State Farm Insurance.



5805 Clarksville Square Drive
Suite 5 • Box 315
Clarksville, Maryland 21029
WASH. 301-596-9100
BALT. 410-531-2057
EMAIL: EMILY@EMILYKENDALL.COM

EMILY A. KENDALL
Agent

Like a good neighbor, State Farm is there.



State Farm Insurance Companies • Home Offices: Bloomington, Illinois



THE DINNER THEATRE OF COLUMBIA

Production of

Godspell

**Conceived and Originally Directed by
JOHN-MICHAEL TEBELAK**

**Music and New Lyrics by
STEPHEN SCHWARTZ**

**Originally Produced on the New York Stage by
EDGAR LANSBURY / STUART DUNCAN / JOSEPH BERUH**

Direction

Mark Minnick & David James

Choreography

Mark Minnick

Music Direction

Ross Scott Rawlings

Scenic & Lighting Design

David A. Hopkins

Sound Design

John Pantazis

Costume Design by

Janine Sunday

Godspell

Is presented through special arrangement with Music Theatre International (MTI).

All authorized performance materials are also supplied by MTI.

www.mtishows.com

The videotaping or other video or audio recording of this
production is strictly prohibited.

Fog, haze, and strobe effects are used in this performance.

Toby's Dinner Theatre of Columbia

5900 Symphony Woods Road, Columbia, MD 21044

Box Office 410-730-8311 • 800-88TOBYS (800-888-6297)

www.tobysdinnertheatre.com

A Special Tribute

Godspell was the first show on the Toby's stage 41 years ago and we dedicate this revival production to the memory of James W. Rouse.

James brought me to this "beautiful city" and continually supported my endeavors to enrich, educate, and entertain.

Godspell is a musical about bringing people together as James did here in Columbia, a city where everyone is welcome and can live life to the fullest.

With respect, appreciation, and much love,

Toby



The COMPANY

Justin Calhoun
as Jesus
Shane Lowry
as John & Judas

Heather Beck
MaryKate Brouillet
Tina Marie DeSimone
Crystal Freeman
David James
DeCarlo Raspberry
Jeffrey Shankle
Janine Sunday

Understudies:

Shane Lowry (Jesus)
Kalen Robinson (Female Company)
Brandon Bedore (Male Company)

ORCHESTRA

Conductor/Keyboards Ross Scott Rawlings, Nathan Scavilla
Guitar Rick Peralta, Kim Spath
Bass Matthew Carroll, Michael Kellam
Drums/Percussion Bob LaForce, Brett Schatz



Anyone & Everyone

would love this shopping experience!

*David's features organic produce,
healthy meals and snacks, vitamins
and much more in an atmosphere of
service and helpful consultation.*

www.davidsnaturalmarket.com
410-730-2304

MUSICAL NUMBERS

Act I

Prologue	Company
Prepare Ye the Way of the Lord	John & Company
Save the People	Jesus & Company
Day By Day	Janine & Company
Learn Your Lessons Well	Tina
O, Bless the Lord, My Soul	Crystal & Company
All for the Best	Jesus, Judas, & Company
All Good Gifts	DeCarlo & Company
Light of the World	David, Heather, & Company

THERE WILL BE ONE 15 MINUTE INTERMISSION

Act II

Turn Back, O Man	David, Heather, & Company
Alas for You	Jesus
By My Side*	MaryKate, Janine, & Company
We Beseech Thee	Jeffrey & Company
Day By Day (Reprise)	Company
On The Willows	Jeffrey, Heather, DeCarlo
Finale	Company

***Music for “By My Side” was written by PEGGY GORDON**

**Lyrics thereof by
JAY HAMBURGER**

How Do I Tip...?

The answer should be based upon your own personal assessment of the service you have received from your actor/waiter. Generally, tipping is based on the price of admission plus any beverages purchased from the bar.

If the service has been satisfactory, a tip of 15% is customary. For those customers who purchased their admission through our group sales department, a gratuity was included in the admission price.

Any beverages purchased by you from your actor/waiter, however, did not include a gratuity. As such, a 15% gratuity on those purchases is customary. Should you find that your actor/waiter has provided you with outstanding service, your recognition of this would be gratefully appreciated. In the event your service has not been up to our excellent standards, please ask to speak to one of our managers.

Thank you for your generosity, and enjoy the show!

WE CARE ABOUT YOUR TOTAL TOBY'S DINNER THEATRE EXPERIENCE!

UNDER THE LIGHTS!



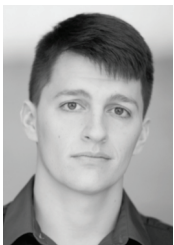
HEATHER BECK

Most recently seen at Toby's in *Shrek* and *Kinky Boots*. Credits Include: *Mamma Mia*, *A Christmas Story*, *Cats*, *Spamalot*, *The King and I*, & *Little Shop of Horrors*. Sign Language Interpreter and business owner by day. Thank you to Toby, Mark, Ross. Love to Shawn, Mathis, and her whole family.



CRYSTAL FREEMAN

Recent roles at Toby's include Effie (*Dreamgirls*), Mrs. Fezziwig (*A Christmas Carol*), Abuela Claudia (*In the Heights*). Morgan State University, BA Music. I dedicate this to Mack and Sky.



BRANDON BEDORE

Brandon is a graduate of The Catholic University of America. Toby's credits include *Shrek* (Pinocchio), *The Little Mermaid*, *Mamma Mia*, *Grease*, *The Hunchback of Notre Dame*, and *Young Frankenstein*, and *Elf*.



DAVID JAMES

Actor, director, Helen Hayes winner (5 nominations, 2 wins), director of CCTA youth theatre, Commission on Presidential Debates (2004-2020), hairdresser, visual merchandiser, plumber, dog rescuer, bartender, world traveler, last seen here in *Elf* and now this... ENJOY!



MARYKATE BROUILLET

Most recently seen at Toby's as Jovie in *Elf* and as Nicola in *Kinky Boots*. Other Toby's favorites include Louise in *Gypsy*, Katherine in *Newsies*, Peter in *Peter Pan*, Eponine in *Les Miserables*, and Wednesday in *The Addams Family*. Keegan Theatre: Marian in *The Bridges of Madison County*, *Spring Awakening*. Riverside Center, Creative Cauldron: *Nevermore*.



SHANE LOWRY

Last seen at Toby's in *Elf*, *Shrek* and *Kinky Boots*. Other Roles: Chad (*Disaster*, *Cockpit*), Sky (*Mamma Mia*, DCT), St. Jimmy (*American Idiot*, MST). Much love to my Family and Friends! Mom, this one is for you!



JUSTIN CALHOUN

Last seen at Toby's in *Elf*. Previous Toby's credits include: *The Little Mermaid* (Prince Eric), *Young Frankenstein* (Victor), *Grease* (Roger), *The Bodyguard* (Stalker), *Shrek* (Captain of the Guard), *A Christmas Story*. JMU Alum. Thanks to Toby, Mark, family and friends!



DECARLO RASPBERRY

Boston Conservatory Graduate, Opera and Musical performer. Credits: *Elf*, *Kinky Boots*, *Bodyguard*, *Grease*, *Hunchback of Notre Dame*, *The Little Mermaid* (Helen Hayes Recipient), *Pippin*, *Smokey Joe's Cafe*, *Brooklyn*, *Miracle..34th*, *Dreamgirls*, *Joseph and the Amazing..Dreamcoat*, among others. Thanks to Toby, Mark, and Crew. www.decarloraspberry.com



TINA DESIMONE

Thrilled to be returning to Toby's! Looking forward to being on stage with the "Old Gang!" Last seen at Toby's as Rosie in *Mamma Mia*. She dedicated her performances to her Rock Star Nieces: Lily and Ella!! "Love you both to the Moon and Back!!" and in loving Memory of "Muffin." May she RIP.



KALEN ROBINSON

received her BFA in Musical Theatre at Howard U. This is her third show at Toby's. Most recently seen narrating for Shakepeare's Theatre Gala. Regional theatre credits include: *Spring Awakening* (Thea) at Round House Theatre and *Grease* (Jan) at Toby's. She thanks God and her supportive family for her success! IG: [k_nicole143](https://www.instagram.com/k_nicole143) Facebook and YouTube: Kalen Robinson

UNDER THE LIGHTS!



JEFFREY SHANKLE
Toby's credits include *Elf* (Buddy), *Hunchback* (Phoebus), *A Christmas Story* (Old Man), *Mamma Mia* (Sam), *Young Frankenstein* (Frederick), *1776* (John Adams), *Shrek* (Lord Farquaad – Helen Hayes Nomination) among many others. Jeffrey toured the US and Canada in productions of *Spamalot* and *Gypsy* and was a performer on Disney Cruise Line.



JANINE SUNDAY
Four time Helen Hayes Nominee: Sylvia (*Danny and Sylvia* - American Century Theatre), Lucy (*Jekyll and Hyde* - Toby's), Maria (*West Side Story* - Toby's), Fiona (*Brigadoon* - West End Dinner Theatre). Other Toby's roles: Witch (*Into the Woods*), Betty (*White Christmas*), Amneris (*Aida*), Grizabella (*Cats*), Kim (*Miss Saigon*). Favorite role: Mommy to Trey!



MUSIC / DANCE / THEATRE / EXHIBITS
VISUAL ARTS / PERFORMANCES / FILM
POETRY / CLASSES / LESSONS



HOROWITZCENTER
VISUAL & PERFORMING ARTS
HOWARD COMMUNITY COLLEGE

LEARN MORE,
SEE UPCOMING EVENTS,
AND PURCHASE TICKETS AT:

BOX OFFICE 443-518-1500
howardcc.edu/horowitzcenter
facebook.com/horowitzcenter

PRODUCTION STAFF

Directors	Mark Minnick, David James
Choreographer	Mark Minnick
Music Director	Ross Scott Rawlings
Assistant Conductor	Nathan Scavilla
Production Stage Manager	Cheryl Stansfield
Assistant Stage Manager	Vanessa Vincent
Scenic/Lighting Designer	David A. Hopkins
Sound Designer	John Pantazis
Costume Designer	Janine Sunday
Technical Director	Jimmy Engelkemier
Assistant Technical Director	John Pantazis
Set Construction	David A. Hopkins, Jimmy Engelkemier, John Pantazis, Emily Thompson
Properties Coordinator	Shane Lowry
Light Board Operators	Jimmy Engelkemier, Heather Williams
Sound Board Operator	John Pantazis, Molly Klezer
Costume Shop Assistant	Sarah King

Thank you *Inspiring Crystal LLC* for the custom shirt designs and printing.

**Thank you to Merriweather Post Pavilion, Columbia Association,
and Visit Howard County
for your continued support of Toby's and this production.**

THEATRE STAFF

Artistic Director	Toby Orenstein
Associate Producer/Casting	Mark Minnick
Associate Artistic Director	David A. Hopkins
General Manager	Joel Friedman
Assistant General Manager	Patrick Albright
Form Manager	Steve Lewis
Chef/Kitchen Manager	Chuck Cofield
Assistant Kitchen Manager	Wanna K. Smith
Director of Group Sales/Tour and Travel	Cheryl Clemens-Everidge
Group Sales Coordinator	Bea Brodsky
Group Sales Hosting Staff	Bob Ciborowski, Melanie Hobbs, Katherine Lewis, Tara Linn, Renita Parker, Marsha Raymond, James Raymond
Box Office Manager	Tere Fulmer
Assistant Box Office Manager	Anne Kierstead
Box Office Staff	Briana Brooks, Katie Falco, Tara Gaudi, Marie Moineau, Judy Mosco, Vanessa Webb
Financial Administrator	Kenn Honn
Youth Theatre Administrator	Janine Sunday
Theatre Photographer	Jeri Tidwell Photography
Website Developer	Digital Studios
Bar Manager	Shawn Kettering
Assistant Bar Manager	Jeffrey Shankle
Maintenance Engineers	Stephen B. Harris, Latanya Sellmane

BEHIND THE SCENES

JOHN MICHAEL TEBELAK (*Author, Creator & Original Director*) John Michael Tebelak originally wrote *Godspell* as his Masters Thesis project at Carnegie-Mellon in 1971. Subsequently, he directed productions of *Godspell* at La MaMa Theatre, the Cherry Lane Theatre, the Promenade Theatre, and on Broadway. He received the 1971 Drama Desk award for Most Promising Director. In 1972, Mr. Tebelak directed the play, *Elizabeth I* on Broadway, and off-Broadway staged *The Glorious One* in 1975 and *Ka-Boom* in 1980. He is also co-writer of the 1973 film of *Godspell* with David Greene. He was dramaturg for the Cathedral Church of St. John the Divine in New York and staged liturgical drama there, and the church's theatre bears his name. John Michael Tebelak died April 2, 1985 of a heart attack in New York City.

STEPHEN SCHWARTZ (*Author, Music & New Lyrics*) Stephen Schwartz wrote the music and lyrics for the current Broadway hit *WICKED*, and has also contributed music and/or lyrics to *GODSPELL*, *PIPPIN*, *THE MAGIC SHOW*, *THE BAKER'S WIFE*, *WORKING* (which he also adapted and directed), *RAGS*, and *CHILDREN OF EDEN*. He collaborated with Leonard Bernstein on the English texts for Bernstein's *MASS* and wrote the title song for the play and movie *BUTTERFLIES ARE FREE*. For children, he has written songs for two musicals, *CAPTAIN LOUIE* and *MY SON PINOCCHIO*. He has also worked in film, collaborating with Alan Menken on the songs for Disney's *ENCHANTED* as well as the animated features *POCAHONTAS* and *THE HUNCHBACK OF NOTRE DAME*, and writing the songs for the DreamWorks animated feature *THE PRINCE OF EGYPT*. His first opera, *SEANCE ON A WET AFTERNOON*, was produced at Opera Santa Barbara and New York City Opera. A book about his career, "Defying Gravity," has been released by Applause Books. Mr. Schwartz has been inducted into the Theatre Hall of Fame and the Songwriters Hall of Fame, and has been given a star on the Hollywood Walk of Fame. Awards include three Academy Awards, four Grammy Awards, and a tiny handful of tennis trophies.

MUSIC THEATRE INTERNATIONAL (MTI, Licensing) Music Theatre International (MTI) is one of the world's leading theatrical licensing agencies, granting theatres from around the world the rights to perform the greatest selection of musicals from Broadway and beyond. Founded in 1952 by composer Frank Loesser, and orchestrator Don Walker, MTI is a driving force in advancing musical theatre as a vibrant and engaging art form.

MTI works directly with the composers, lyricists and book writers of these musicals to provide official scripts, musical materials and dynamic theatrical resources to over 70,000 professional, community and school theatres in the US and in over 60 countries worldwide.

MTI is particularly dedicated to educational theatre, and has created special collections to meet the needs of various types of performers and audiences. MTI's Broadway Junior™ shows are 30- and 60-minute musicals for performance by elementary and middle school-aged performers, while MTI's School Editions are musicals annotated for performance by high school students.

MTI maintains its global headquarters in New York City with additional offices in London (MTI Europe) and Melbourne (MTI Australasia).

Drink Special

"The Light of the World"

(available as both alcoholic
and non-alcoholic)

Served in a souvenir glass

for you to keep!

Only \$8.95 (plus tax)

ADVERTISE HERE

and reach 110,000 theatre lovers, just like you! Year-round advertising that you can change throughout the year. Call Barbara Russell at 410-730-4024

BEHIND THE SCENES



TOBY ORENSTEIN (*Artistic Director*): An alumna of New York's High School of Performing Arts & Columbia University, Toby has combined her roles as educator and director throughout her theatrical career. She's taught at Catholic University, her own

Columbia Center for Theatrical Arts, and has directed most of the productions at Toby's Dinner Theatre of Columbia since its opening in 1979. Since 1975, Toby has been the creative force behind *The Young Columbians*, a touring musical troupe that has played at the White House and Wolf Trap among other places. In the last twenty-five years, Toby's Dinner Theatre has received over 120 Helen Hayes Award Nominations. Toby herself has been nominated 12 times and won the 2003 Helen Hayes Award for her direction of *Jekyll and Hyde*.



MARK MINNICK (*Associate Producer/Casting/Director/Choreographer*) Mark has received 15 Helen Hayes Award nominations for direction and choreography, winning the award for Monty Python's *Spamalot* at Toby's. His most recent credits

include direction/choreography for *Elf*, *Shrek*, *Kinky Boots*, *The Little Mermaid* (HH Nominated Best Musical & Director), *Young Frankenstein* (HH Nominated Best Choreography), *Mamma Mia!*, *The Addams Family*, *Hairspray*, *Beauty and the Beast*, and *Joseph...Dreamcoat*. Mark spent 15 years as Producer/Casting Director for Phoenix Entertainment. He also choreographed their National Tours of *The Pajama Game* and *Camelot* and worked all over the globe mounting productions of *Grease*, *Fame*, *The Addams Family* and *Rock of Ages* in Seoul, San Juan, Istanbul, Macau, Singapore, Shanghai and Beijing to name a few. It is a honor to work side by side with Toby Orenstein!

DAVID JAMES (*Co-Director*) David's association with Tobys started several years back in 1986, with her area premiere of *A Chorus Line*. His continued stay has led to many opportunities both on and off stage. With over a 100 main stage productions under his belt, he is also tackling being the director of Toby's TAP, introducing young audiences to the magic of live theatre! With exposure to Toby's direction over the years, David has switched gears several times to direct many Columbia/Baltimore main stage productions such as *Fiddler on the Roof*, *Cats*, *Beauty and the Beast*, *A Christmas Carol*, *The Wizard of Oz*, and others. David is excited about bringing *Godspell* to life for you the audience, with a life long friend Mark Minnick. Enjoy the show!

ROSS SCOTT RAWLINGS (*Music Director*) An accomplished pianist, arranger/orchestrator and conductor, holds over three hundred professional credits since the age of fifteen. Mr. Rawlings resides in Westminster, Maryland and serves as Director of Choral Activities at Marriotts Ridge High School.

DAVID A. HOPKINS (*Scenic/Lighting Designer/Associate Artistic Director*) has worked for Toby's for more than a few years in many jobs. He is proud to be a Helen Hayes Award nominee for his light design of Disney's *The Little Mermaid* and his set design for *A Christmas Story*. David is also a MAC Award winner for his work in New York. Thanks to all for their hard work. Here's to another great night of live theater.

JOHN PANTAZIS (*Sound Designer/Assistant Technical Director*) Johnny has worked as a Sound Technician/Designer for 12 years and worked with Toby's for 6 years. He holds a BS in Theatre Design and Production. Thank you to my family and friends.

JANINE SUNDAY (*Costume Designer*) Janine has performed many roles on stage at Toby's, but she also enjoys being part of the creative team. As the resident costume designer for CCTA, she designed for many Toby's mainstage productions including *All Shook Up*, *The Buddy Holly Story*, *Happy Days*, *Dreamgirls*, and *Joseph*. Janine designs for MetroStage, Red Branch Theatre Company/DLC, and designed wigs for Rep Stage and Olney Theatre. She looks forward to more design opportunities.

JIMMY ENGELKEMIER (*Technical Director*) Jimmy is thrilled to return to Toby's as the technical director. He has been in many different tech roles at Toby's over the years. Enjoy the show.

CHERYL STANSFIELD (*Stage Manager*) After a decade-long hiatus, Cheryl is so happy to be backstage again at Toby's! She had previously stage managed at the Toby's Baltimore location for four seasons, before leaving in 2010. Since then she has worked for Carnival Cruise Lines, Round House Theatre, and Imagination Stage. For the past seven years, she has been zig-zagging across the country, working the national tours of *My Fair Lady*, *On Your Feet: The Story of Emilio and Gloria Estefan*, and *Dirty Dancing*. Much love and thanks to Mark, Tina and the entire Toby's company for welcoming her back home.

THE COLUMBIA ORCHESTRA
2021-2022 SEASON

Comeback Concert

October 16, 2021, 7:30pm

THE PLANETS

December 4, 2021, 7:30pm

THE PINES OF ROME

February 5, 2022, 7:30pm

SYMPHONIC DOPS

March 12, 2022, 7:30pm

March 13, 2022, 3:00pm

MAHLER'S FIRST

May 21, 2022, 7:30pm



12/18/21, 10:30am & 1:00pm



3/25/22, 10:30am & 1:00pm

All subscription and family concerts are held at the Jim Rouse Theatre. All programs are subject to change.

www.columbiaorchestra.org