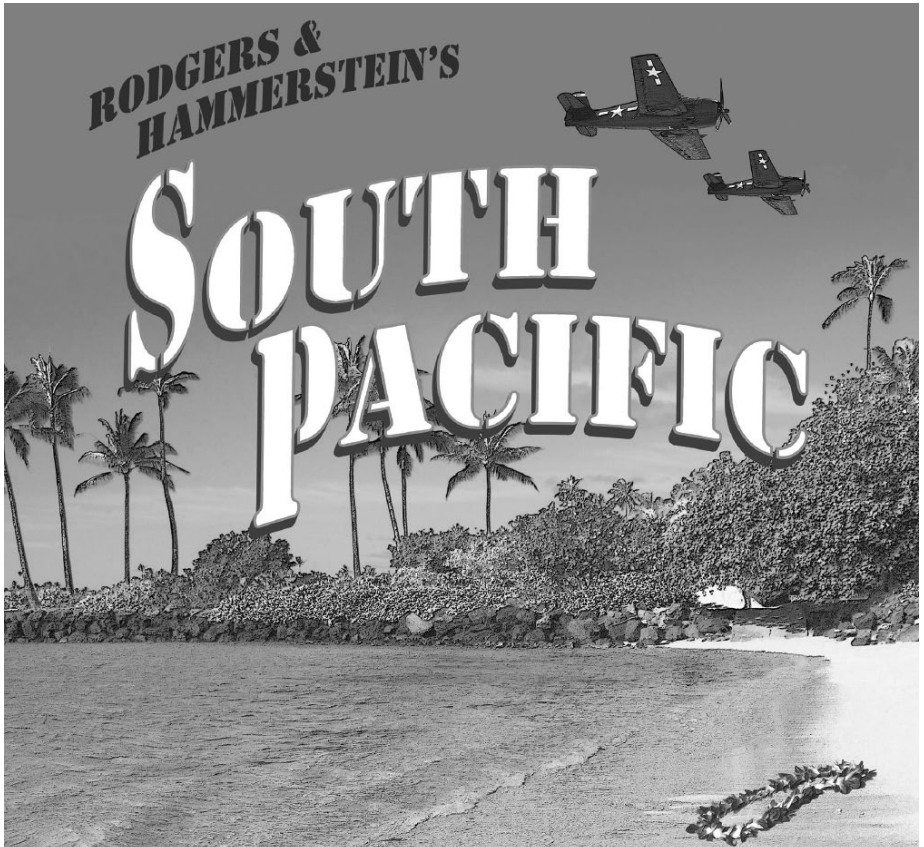




THE
DINNER THEATRE
OF COLUMBIA

PRESENTS



JANUARY 14 - MARCH 20, 2016

Next at TOBY'S

Peter Pan

March 26 - June 12



Make Extraordinary

Howard Hughes



Downtown
Columbia

HOWARDHUGHES.COM
DOWNTOWNCOLUMBIAMD.COM

Good rates backed by
Good Neighbor service
That's State Farm Insurance.



EMILY A. KENDALL
Agent

5805 Clarksville Square Drive
Suite 5 • Box 315
Clarksville, Maryland 21029
WASH. 301-596-9100
BALT. 410-531-2057
EMAIL: EMILY@EMILYKENDALL.COM

Like a good neighbor, State Farm is there.



State Farm Insurance Companies • Home Offices: Bloomington, Illinois



THE DINNER THEATRE OF COLUMBIA

Presents

South Pacific

Music by Richard Rodgers

Lyrics by Oscar Hammerstein II

Book by Oscar Hammerstein II & Joshua Logan

Adapted from the Pulitzer Prize Winning Novel

“Tales of the South Pacific” by James A. Michener

Directed & Choreographed by

Mark Minnick

Musical Direction by

Reenie Codelka

Set & Light Design by

David A. Hopkins

Sound Design by

Mark Smedley

Costumes by

Lawrence B. Munsey

South Pacific is presented by special arrangement with R&H Theatricals,

601 West 26th Street, Suite 312, New York, NY 10001

Tel 800/400-8160 or 212/516.4000 Fax 212/268.1245

Video and/or audio recording of this performance by any means whatsoever
is strictly prohibited.

Fog & Strobe effects may be used in this performance.

Toby's Dinner Theatre of Columbia • 5900 Symphony Woods Road • Columbia, MD 21044

Box Office (410) 730-8311 • (301) 596-6161 • (410) 995-1969

www.tobysdinnertheatre.com

PRODUCTION STAFF

Director/ Choreographer	Mark Minnick
Music Director/ Orchestration.....	Reenie Codelka
Production Manager/ Casting	Vickie S. Johnson
Production Stage Manager	Kate Wackerle
Lighting & Scenic Designer	David A. Hopkins
Costume Designer	Lawrence B. Munsey
Costume Assistant	Mary Quinn
Sound Designer	Mark Smedley
Dialect Coach	Jenny Male
Dance Captain	Amanda Kaplan
Technical Director	Jimmy Englekemier
Set Construction	David A. Hopkins, Jimmy Englekemier, Russell Sunday, John Pantazis
Properties & Set Dressings Coordinator	Amy Kaplan
Stage Managers	Cree Menefee, Kate Wackerle
Light Board Operators	Coleen M. Foley, Heather Williams
Sound Board Operator	Johnny Pantazis, Jimmy Englekemier
Stage Crew	Gaby Castillo, Mikayla Kraft, Erin MacDonald Michael Nesvold

THEATRE STAFF

Artistic Director	Toby Orenstein
Associate Artistic Directors	David A. Hopkins, Lawrence B. Munsey
General Manager.....	Joel Friedman
Assistant Manager	Patrick Albright
Form Manager	Steve Lewis
Chef / Kitchen Manager	Chuck Cofield
Chef / Assistant Kitchen Manager	Anthony Beachum
Director of Group Sales / Tour and Travel	Cheryl Clemens
Group Sales Coordinator	Bea Brodsky
Group Sales Hosting Staff	Bob Ciborowski, Bonnie Ciborowski, Lauren Earp, Marsha Raymond, Michele Sanders
Director of Marketing	Nancy Michel
Box Office Manager	Tere Fulmer
Box Office Staff	Laura Blasi, Joules Duncan, Katie Falco, Estelle King Bethany Kohner, Lettie Lazaga, Marie Moineau, Erin MacDonald, Michele Sanders, Ben Sechrest
Bookkeeper	Bayna Castner
Theatre Photographer	Jeri Tidwell Photography
Website Developer	Mark Brodsky
Youth Theatre Administrator	Janine Sunday
Bar Manager	Shawn Kettering
Maintenance Engineers	Stephen B. Harris, Mike Monahan

ADVERTISE HERE

and reach 110,000 theatre lovers, just like you!
Year-round advertising that you can change throughout the year.
Call 410-730-4024 and ask for Barbara Russell.

The COMPANY

(in order of appearance)

Ngana Anna Jachero or Dulcie Pham
Jerome Aiden Levin or Nathan Pham
Henry RJ Pavel
Ensign Nellie Forbush Teresa Dansky
Emile de Becque Russell Rinker
Bloody Mary Crystal Freeman
Liat Surasree Das
Luther Billis Jeffrey Shankle
Professor Darren McDonnell
Stewpot Shawn Kettering
Lt. Joseph Cable Jonathan Helwig
Cmdr. William Harbison David Bosley-Reynolds
Capt. George Brackett Robert Biedermann 125
Radio Operator Bob McCaffrey Justin Calhoun
Lt. Buzz Adams David Jennings

Ensemble Jeremy Scott Blaustein, Justin Calhoun,
Erica Clare, David James, David Jennings, Amanda Kaplan,
Julia Lancione, Mackenzie Newbury, RJ Pavel

SWING

Janine Sunday

UNDERSTUDIES

Emile (Lawrence B. Munsey), Nellie (Mackenzie Newbury), Cable, Henry (Justin Calhoun),
Bloody Mary (Janine Sunday), Luther Billis (Jeremy Scott Blaustein), Captain Brackett
(Darren McDonnell), Cmdr. Harbison (David James), Liat (Amanda Kaplan)

ORCHESTRA

Conductor/Keyboard I Reenie Codelka or Barry Hamilton
Keyboard II Ann Prizzi or Pamela Wilt
Trumpet Mike Barber, Frank Gorecki or Tony Neenan
Reeds/Woodwinds Kevin Dolan, Steve Haaser or Charlene McDaniel
Trombone Patrick Crossland, Jay Ellis, or Dan Pendley
Drums/Percussion Bob LaForce, Evander McLean or Nathan Scavilla

How Do I Tip...?

The answer should be based upon your own personal assessment of the service you have received from your actor/waiter.

Generally, tipping is based on the price of admission plus any beverages purchased from the bar.

If the service has been satisfactory, a tip of 15% is customary.

For those customers who purchased their admission through our group sales department, a gratuity was included in the admission price. Any beverages purchased by you from your actor/waiter, however, did not include a gratuity. As such, a 15% gratuity on those purchases is customary.

Should you find that your actor/waiter has provided you with outstanding service, your recognition of this would be gratefully appreciated. In the event your service has not been up to our excellent standards,

please ask to speak to one of our managers.

Thank you for your generosity, and enjoy the show!

SCENES & MUSICAL NUMBERS

The action of the play takes place on two islands in the South Pacific during World War II. There is one week's lapse of time between the two acts.

Act I

Scene 1: The terrace of Emile de Becque's Plantation Home

Dites-Moi Ngana and Jerome
 A Cockeyed Optimis Nellie
 Twin Soliloquies Nellie and Emile
 Some Enchanted Evening Emile
 Reprise: Dites-Moi Ngana, Jerome and Emile

Scene 2: The edge of a Palm grove near the beach

Bloody Mary Seabees
 There is Nothin' Like A Dame Billis and Seabees
 Bali Ha'i Bloody Mary
 Cable Hears "Bali Ha'i" Cable

Scene 3: The Company Street

Scene 4: Inside the Island Commander's Office

Scene 5: The Company Street

Scene 6: The Beach

I'm Gonna Wash That Man Right Out Of My Hair..... Nellie and Nurses
 Reprise: Some Enchanted Evening Emile and Nellie
 A Wonderful Guy Nellie and Nurses

Scene 7: Inside the Island Commander's Office

Scene 8: Another part of the Island

Reprise: Bali Ha'i Native Girls

Scene 9: Inside a Native hut on Bali Ha'i

Younger Than Springtime Cable

Scene 10: Near the beach on Bali Ha'i

Scene 11: Emile's Terrace

Reprise: A Wonderful Guy Nellie and Emile
 This Is How It Feels Nellie and Emile
 Encore: I'm Gonna Wash That Man Emile
 Finale Act I Emile



Visit our NEW, Larger store!!!

You'll love this shopping experience!

David's features organic produce, healthy meals and snacks, vitamins and much more in an atmosphere of service and helpful consultation.

www.davidsnaturalmarket.com

410-730-2304

5410 Lynx Lane, Columbia 21044

INTERMISSION

Act II

- Scene 1:** A Performance of “The Thanksgiving Follies”
Opening Act II (Dance) Nellie, Nurses and GI’s
- Scene 2:** Backstage at “The Thanksgiving Follies:
Happy Talk Bloody Mary and Liat
- Scene 3:** The Performance Resumes, as in Scene I
Honey Bun Nellie, Billis and Ensemble
- Scene 4:** Backstage, as in Scene 2
You’ve Got To be Carefully Taught Cable
This Nearly Was Mine Emile
- Scene 5:** Another part of the Island
- Scene 6:** Inside the Island Commanders Office
- Scene 7:** Another part of the Island
- Scene 8:** Inside the Island Commanders Office
- Scene 9:** The Beach
Reprise: Some Enchanted Evening Nellie
- Scene 10:** The Beach
Reprise: Honey Bun All
- Scene 11:** Emile’s Terrace
Finale Nellie, Ngana, Jerome and Emile



HOROWITZCENTER

VISUAL & PERFORMING ARTS

HOWARD COMMUNITY COLLEGE

DISCOVER GREATNESS

MUSIC | THEATRE | DANCE | FILM | POETRY
VISUAL ARTS | PERFORMANCES | EXHIBITS
CLASSES | LESSONS

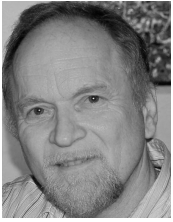
howardcc.edu/horowitzcenter

Box Office: 443-518-1500

Open Mon-Fri 12-6 pm

*"Sunbeam" Cathrin Hoskinson
Howard County ARTsites 2014-2015*

UNDER THE LIGHTS!



ROBERT BIEDERMANN 125 (Captain Brackett) His Father was a US Navy Captain during WWII in the South Pacific; His Mother was a WAVE during WWII. What better dedication than to do this role for his Parents. Almost 50 shows at Toby's, VietNam Vet, Helen Hayes Nomination, 12 National Tours. Thank you, Mark & Toby.



TERESA DANSKEY (Nellie Forbush) Recent and favorite credits include: Florence in *Chess* (KAT), Holly in *Wedding Singer* (TAP), Cleo in *The Most Happy Fella* (TAP), and *In the Heights* (LTA). She is currently completing her Master's in International Education at GW.



JEREMY SCOTT BLAUSTEIN (Seabee) is a Drama Desk and Outer Critics Circle Award nominated Broadway producer of 17 productions, has acted alongside Sandy Duncan and Carole Shelley, has directed in London's West End, and had his debut novel published in May of 2014. BFA: Shenandoah University.



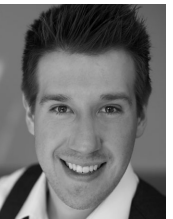
SURASREE DAS (Liat) High as a kite to be a part of Toby's for the first time and explore the beautiful heart and spirit of Liat. I hope this story emanates compassion and unity throughout the room.



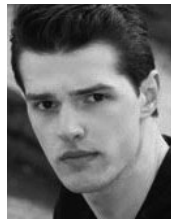
DAVID BOSLEY-REYNOLDS (Cmdr. Harbison) is glad to be back at Toby's, having just been seen as Joseph in *It's A Wonderful Life*. Previous toby's roles include Daddy Warbucks, The King of Siam, Tevye, & the Cowardly Lion. To absent friends.



CRYSTAL FREEMAN (Bloody Mary) a native Detroitier, is excited to be back at Toby's! She wants to dedicate this run to her beautiful daughters, Mackenzie and Skylar.



JUSTIN CALHOUN (Bob McCaffrey) is thrilled to join Toby's again for another production! Recent credits at Toby's include- *It's A Wonderful Life* (Harry Baily), *Ragtime*, *Into the Woods* (Rapunzel's Prince) and *1776: The Musical* (Dr. Lyman). Special thanks to my family, friends, and Toby's.



JONATHAN HELWIG (Lt. Cable) is excited to be returning to Toby's, last seen in *Into The Woods* (Cinderella's Prince). Area credits include: *RENT* (Roger), *Spring Awakening* (Ernst), *Beauty and the Beast* (Gaston), *Bye Bye Birdie* (Conrad), and *Aida* (Radames).



ERICA CLARE (Nurse) REGIONAL: *Girlstar*, *Thin Air*, *Into the Woods*, *Foul Play*, *Big Nate*. EDUCATIONAL: *Unlimited-World Premiere*, *Godspell*, *Sweet Charity*, *The Music of Marvin Hamlisch* (Kennedy Center, Millennium Stage). Education: B.M. Catholic University 2015.



ANNA JACHERO (Ngana) South Pacific is her 1st Toby's show! A first grader at Pointers Run Elementary, she performed in CCTA productions of *Beauty and the Beast* and *Annie Junior*. She sends many thanks to Toby and Mark, love to family.

UNDER THE LIGHTS! (CONTINUED)



DAVID JAMES (Seabee) Actor (35years), Director, HH winner (4 nom's/ 2 wins - best supporting actor *Oz & Godspell*). Most recently, a Helen Nomination for *Spamalot*. Youth Theatre, Commission on Presidential Debates (2004, 2008, 2012). Hairdresser, visual merchant, plumber, dog rescuer, world traveler... ENJOY!



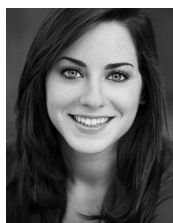
AIDEN LEVIN (Jerome) is delighted for his role, Jerome, in *South Pacific*. He's a first grader who loves learning languages, jujitsu, and basketball. His previous role was a "Prince" in *The King and I*. Aiden thanks his family for their support.



DAVID JENNINGS (Lt. Buzz Adams) is pleased to be back! Last seen as the Pirate King in *Pirates*, Sir Lancelot in *Spamalot*, and JP Morgan in *Ragtime*, David now produces shows with Epic productions... visit epicproductioninc.org. Love to his wife, Jamie Jennings.



DARREN MCDONNELL (Professor) Toby's credits: John Dickinson (1776), Mal Beinkle (*Addams Family*), Sir Robin (*Spamalot*) - HH Nomination, Shellhammer (*Miracle on 34th Street*). Regional credits: Bellamy (*The Fantasticks*), Freddy (*Breast in Show*), Bob Wallace (*White Christmas*), Dan (*Next to Normal*), Victor (*Private Lives*).



AMANDA KAPLAN (Nurse) Area credits include: *The Producers*, *Guys & Dolls*, *Hairspray* (Penny), *Mary Poppins*, *Memphis*, *Spamalot*, *The Addams Family*, *In The Heights*, *Grease* (Patty), *White Christmas*, *Anne Frank* (Anne Frank); Regional: *A Chorus Line* (Diana), *42nd Street* (Peggy), *Chicago*, *Anything Goes* (Hope).



LAWRENCE B. MUNSEY (US Emile) Toby's credits include: Ernie (*It's A Wonderful Life*), Wolf/Father (*Into the Woods*), John Hancock (1776), Gomez (*The Addams Family*), King Arthur (*Spamalot*), Javert (*Les Miserables*), Captain (*The Sound of Music*) and Professor (*Legally Blonde*).



SHAWN KETTERING (Stewpot) Credits include: *The Addams Family* (Fester), *Spamalot* (Sir Bedevere), *Fiddler* (Perchik), *Seussical* (Horton), *The Buddy Holly Story* (Big Bopper), *The Will Rogers Follies* (Will Rogers), *Grease* (Sonny), *Joseph...* (Pharaoh). Much love to his beautiful wife, Heather.



MACKENZIE NEWBURY (Nurse) was most recently seen as Cleo in *The Most Happy Fella* and in Studio Theatre's *Silence! The Musical* as Dream Clarice. Regional credits include *42nd Street* and *Oklahoma!* Recent graduate of Catholic University, BM Musical Theatre.



JULIA LANCIONE (Nurse) National Tours: *The Addams Family*, *Cats*. Favorite Toby's: *Into the Woods* (Cinderella), *Ragtime* (Evelyn), *Wizard of Oz* (Dorothy). BFA Shenandoah Conservatory & AMDA NYC. Love to Mom, Daddio, Emmy, and husband, Dan: my "wonderful guy"!

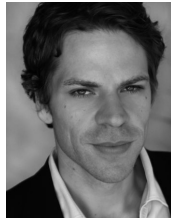


RJ PAVEL (Henry/Seabee) Toby's (Mary Poppins, 1776), Constellation Theatre Company (*Avenue Q*), DC Music Theatre Workshop (*Family Portrait*), Stageworks (*A Few Good Men*), Ritz Theatre Company (*Legally Blonde*), Busch Gardens, Walt Disney World. BFA Musical Theatre, University of the Arts. www.rjpavel.com

UNDER THE LIGHTS! (CONTINUED)



DULCIE PHAM (Ngana), a 5th grader, is delighted to be part of *South Pacific*. She has had a passion for theatre, singing, and dancing since she was 6. Favorite roles include *Little Dancer* at The Kennedy Center (Charlotte Van Goethem (u/s) and *The King & I* at Olney Theater Center (Princess Ying Yaowalak).



RUSSELL RINKER (Emile de Becque) Toby's debut! For 8 years Russell was a Blue Man in the world-famous Blue Man Group. Other credits: Los Angeles Opera, Chicago Shakespeare Theater, Tonight Show, Arrested Development, Disney Channel. Russell is a pianist, fight choreographer, and William & Mary grad.



NATHAN PHAM (Jerome), a 3rd grader, is thrilled to be part of *South Pacific* at Toby's! He has a passion for singing, dancing, and karate. Nathan thanks his parents, families, and teachers for their love and encouragement.



JEFFREY SHANKLE (Billis) Toby's credits include *Into the Woods* (Baker), *1776* (John Adams), *Mary Poppins* (Bert), *Shrek* (Lord Farquaad - Helen Hayes nomination - supporting actor), *Spamalot* (Patsy), *Les Miserables* (Marius), among others. National Tours of *Spamalot* and *Gypsy* as well as Disney Entertainment.



Discover the school where your child takes center stage.

GLENELG
COUNTRY SCHOOL

12793 Folly Quarter Road
Ellicott City, Maryland 21042
410-531-8600 • www.glenelg.org

25+ Years in Howard County



FULL SERVICE LOCKSMITH
LICENSED • BONDED • INSURED
RESIDENTIAL
COMMERCIAL
COMPLETE MOBILE SERVICE
TRUCKS

Hours: Monday thru Friday
7:30 am - 5 pm

 Complete Service Center 
410-997-5969
Emergency Service **1-800-848-7754**
8970-C RT. 108, COLUMBIA, MD 21045

Drink Special served in a souvenir glass... \$8.95 + tax
"The Bali Ha'i"
Also Available in a NON-Alcoholic Version!

BEHIND THE SCENES



TOBY ORENSTEIN (Co-Director/Artistic Director): An alumna of New York's High School of Performing Arts & Columbia Univ., Toby has combined her roles as educator and director throughout her

theatrical career. She's taught at Catholic Univ., her own Columbia Center for Theatrical Arts, and has directed most of the productions at Toby's Dinner Theatre of Columbia since its opening in 1979. Since 1975, Toby has been the creative force behind *The Young Columbians*, a touring musical troupe that has played at the White House and Wolf Trap among other places. In the last thirty years, Toby's Dinner Theatre has received over 80 Helen Hayes Award Nominations, and Toby herself received the 2003 Helen Hayes Award for her direction of *Jekyll and Hyde*.

MARK MINNICK (Director/Choreographer) has received eight Helen Hayes Award nominations, winning for *Monty Python's Spamalot* at Toby's. Direction and/or Choreography credits include the National Tours of *Camelot* and *The Pajama Game*, *Grease* (Korea tour, productions in Istanbul and Macau) and over 40 productions in the area. Mark spent a month in Beijing working on the first Chinese language production of *FAME* and can be seen in the acclaimed documentary featuring that production entitled *The Road to Fame*. For Ruth Ann.

MAUREEN "REENIE" CODELKA (Musical Director, Conductor), has done Opera, Musical Theatre & Cabaret for many years in the D. C., New York & International areas. She has been music director/pianist and or conductor for over 100 musicals and 25 operas throughout the D.C. area, New York, New England, Korea and Italy. Current projects include the Young Artists of America at the Strathmore, Maryland Lyric Opera, Toby's & the Shakespeare Theatre Company. Toby's shows include *Oklahoma*, *The Pirates of Penzance* & *It's A Wonderful Life*.

VICKIE S. JOHNSON (Production Manager) is happy to be a part of such a wonderful cast & crew! Favorites include *Memphis*, *Spamalot*, *In the Heights*, *The Color Purple*, *Legally Blonde*, *Rent*, *Chicago*, *Into the Woods*, *Sunday in the Park with George* & *Once on this Island*. A member of the Toby's family since 1987, she hopes to continue her long run here. Many thanks to all for such a great show- Enjoy!

DAVID A. HOPKINS (Scenic & Lighting Designer) This is the 10th year of designing sets for Toby's. Among his favorites are *Memphis*, *In The Heights*, *Anything Goes* and *The Color Purple*. A Big thanks to the crew for working in the cold winters and hot summers in the shop. Don't forget to have fun.

KATE WACKERLE (Production Stage Manager) is excited to be stage-managing her 33rd Toby's production! Kate holds a BFA in Theatre Technology and Stage Management. Thank you to friends and family - enjoy the show!

LAWRENCE B. MUNSEY (Costume Designer/ Associate Artistic Director) Besides numerous acting credits around the area, Larry has worked in Las Vegas in *Starlight Express*, *City Lights*. He has costumed many shows and has worked on Broadway's *Bombay Dreams*, *Avenue Q* and *Phantom of The Opera*. He directed *Footloose*, *The Full Monty*, *Damn Yankees*, and *Cinderella* and co-directed *Titanic*, which was nominated for Outstanding Direction by the Helen Hayes committee. He sends thanks to Toby for all the chances.

MARK SMEDLEY (Sound Designer) *South Pacific* marks show number 4 at Toby's. An alumnus of Howard Community College, Mark is also the Associate Technical Director for the Horowitz Center at HCC. He has been with the college for 12 years, working on various shows for the Theatre, Music, and Dance Departments, Rep Stage, and The Arts Collective. While versed in all aspects of theatre, sound and projections are his main areas of concentration.

AMY KAPLAN (Properties & Set Dressing) holds an MFA in Sculpture from MICA and has been with Toby's since 2003. When not working on props, this proud parent of two writes science fiction. Alkaplan.wordpress.com

Join Toby's Email List

Stay up to date on
Toby's deals and events!

Text:
Tobys
to 22828





Auto Stream Car Care Center - Shell • Avalon Nails and Spa • Banfield Animal Hospital • Casey's Coffee
Cleaners Plus • Dorsey's Search Wine & Spirits • Giant Food • Great Clips • Honeybaked Ham • Hunan Legend
Master Barber • Parcel Plus • Subway • Trattoria - Pizza, Pasta & More • Yama Sushi

www.columbiavillagecenters.com

columbia village centers

Very close to home.



Bank of America • Best Hunan • Corner Stable • CVS Pharmacy • Glamour Salon • Harris Teeter • King's Cobbler
Kings Contrivance Cleaners • Kings Contrivance Exxon • Kings Contrivance Formal & Bridal Wear
Kings Contrivance Jewelers • Kings Contrivance Liquor & Smoke Shop
M&T Bank • Master Barber • McDonald's • Rita's Ice • State Farm Insurance • Subway • Sushi Nari
The UPS Store • Trattoria E Pizzeria de Enrico

www.columbiavillagecenters.com

columbia village centers

Very close to home.



Bagel Bin & Deli • The Columbia Bank • Everett Jewelers • Giant Food • Hair Cuttery • Ledo Pizza • M&T Bank
Massage Envy • McDonald's • Nouvelle Nails • River Hill Cleaners
River Hill Optical • River Hill Sports Grille • Subway • Sunoco • The UPS Store • Tower Federal Credit Union • Vintage Cellars

www.columbiavillagecenters.com



columbia village centers

Very close to home.